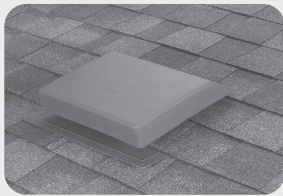


## TRI-BUILT® ROOF LOUVERS

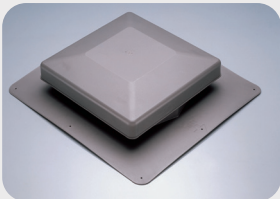
Roof louvers are covered openings that allow air to escape the attic. Several of these vents are usually required to properly ventilate the attic. They should be placed evenly across the roof. Choose from metal or plastic in round, square or slant-back designs.



### TRI-BUILT® Plastic Slant Back

- 16.5" x 19.5" flashing
- NFA (square inches): 61/pc.
- 9" opening

BLACK  
BROWN  
MILL  
W/WOOD



### TRI-BUILT® Plastic Square Top

- 17" x 18" flashing
- NFA (square inches): 61/pc.
- Rain diverter throat
- 9" opening

BLACK  
BROWN  
MILL  
W/WOOD



### TRI-BUILT® Aluminum Slant Back

- 1-piece base and throat is weather tight and adds strength
- Dade County Approved
- Large flange for easy installation
- NFA (square inches): 50/pc.
- 8" opening

BLACK  
BROWN  
MILL  
W/WOOD



### TRI-BUILT® Galvanized Square Vent

- Heavy-duty galvanized construction
- NFA (square inches): 50/pc.
- 8" opening

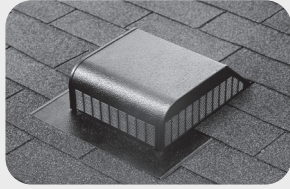
BLACK  
BROWN  
MILL  
W/WOOD



### TRI-BUILT® Aluminum Square Vent

- Aluminum or galvanized
- Heavy, rust-free integral screen
- NFA (square inches): 50/pc.
- 8" opening

BLACK  
BROWN  
MILL  
W/WOOD



### TRI-BUILT® Galvanized Slant Vent

- Heavy-duty galvanized construction
- NFA (square inches): 50/pc.
- 8" opening

BLACK  
BROWN  
MILL  
W/WOOD



### TRI-BUILT® Galvanized Metal Dome Vent

- Galvanized steel
- 24" x 24" flashing
- NFA (square inches): 144/pc.
- 14" opening

BLACK  
BROWN  
MILL  
W/WOOD



### TRI-BUILT® Bath/Dryer 4" Plastic Vent

- Installs easily as a roof cap or as a side vent
- 4" diameter stem
- 3-7/8" Stem length
- Dampered for one-way venting
- Screen protects against debris; removable for dryer venting

## ROOF LOUVER PRODUCT COLOR CHART



MILL	BLACK
W/WOOD	BROWN